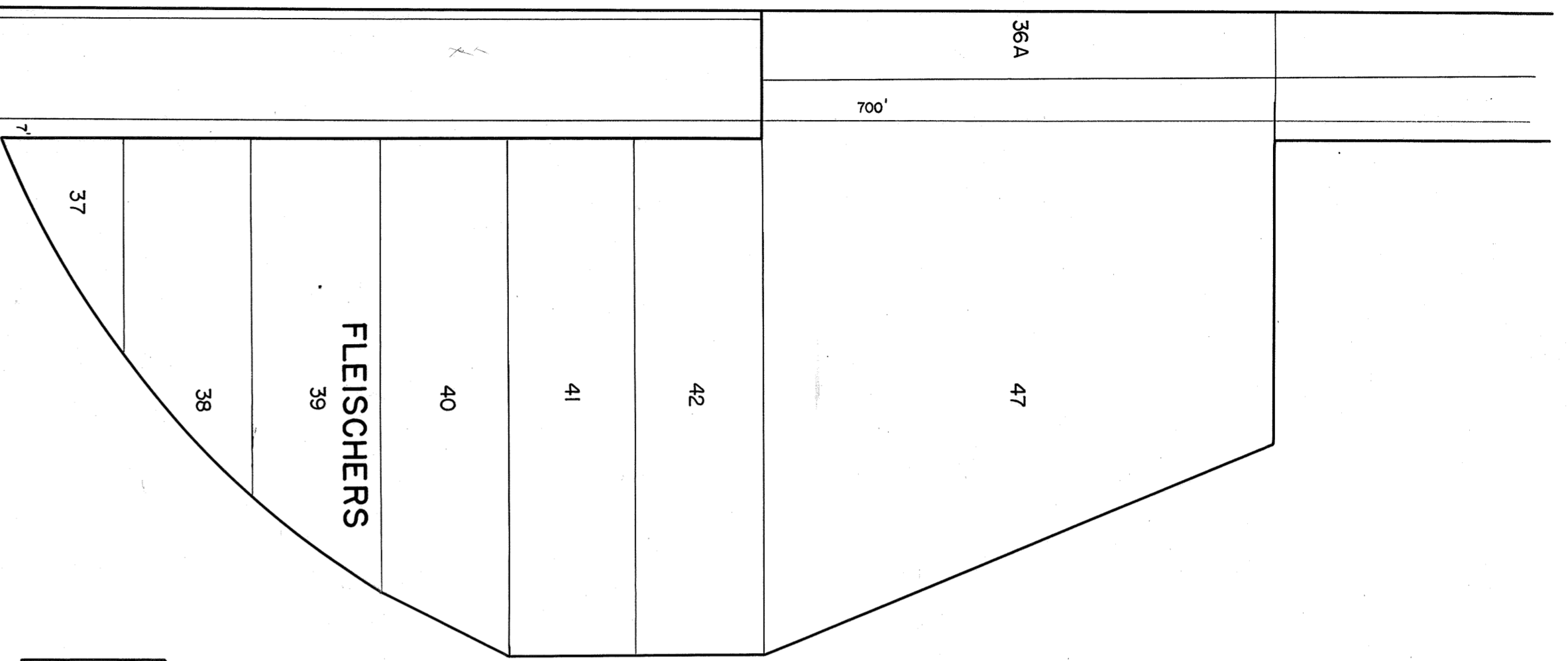


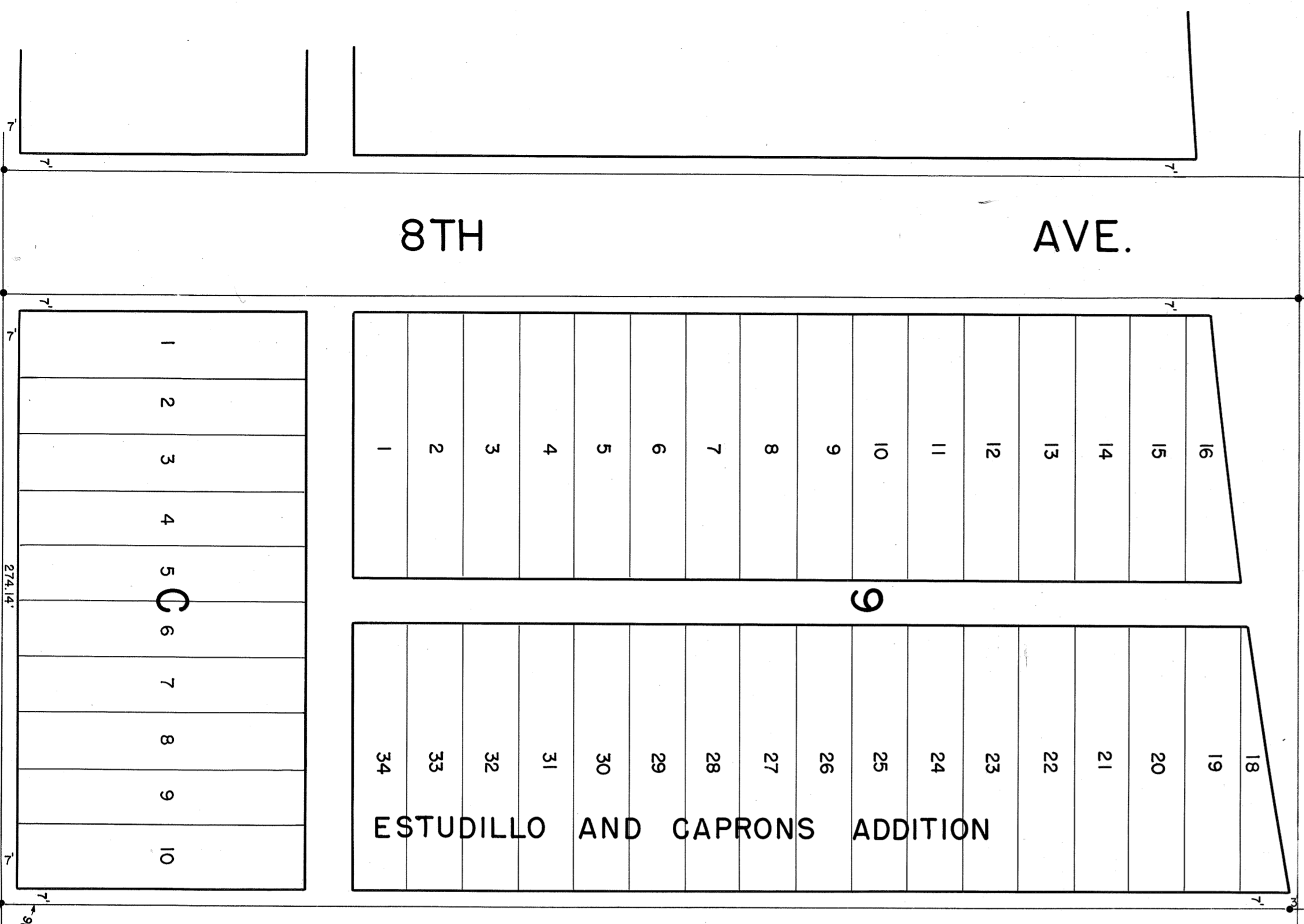
See old sheet # 260 also.

MICROFILMED
JAN 24 1963

FREEWAY



WASHINGTON ST.



8TH AVE.

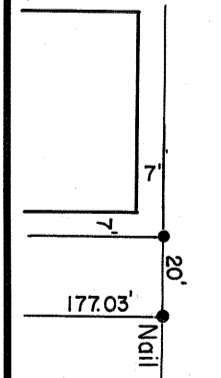
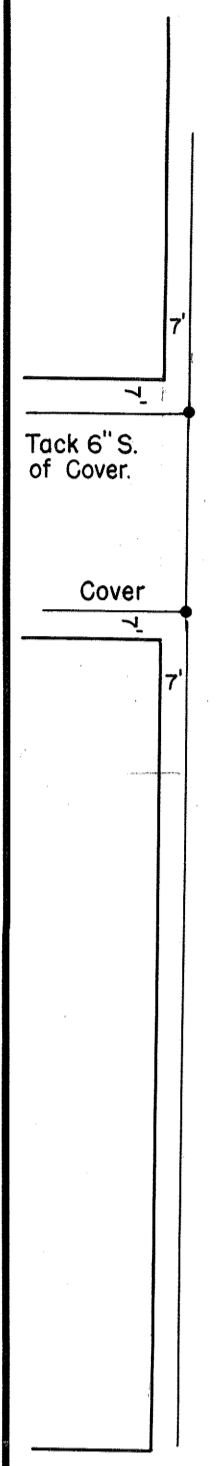
9TH AVE.

CABRILLO

10TH AVE.

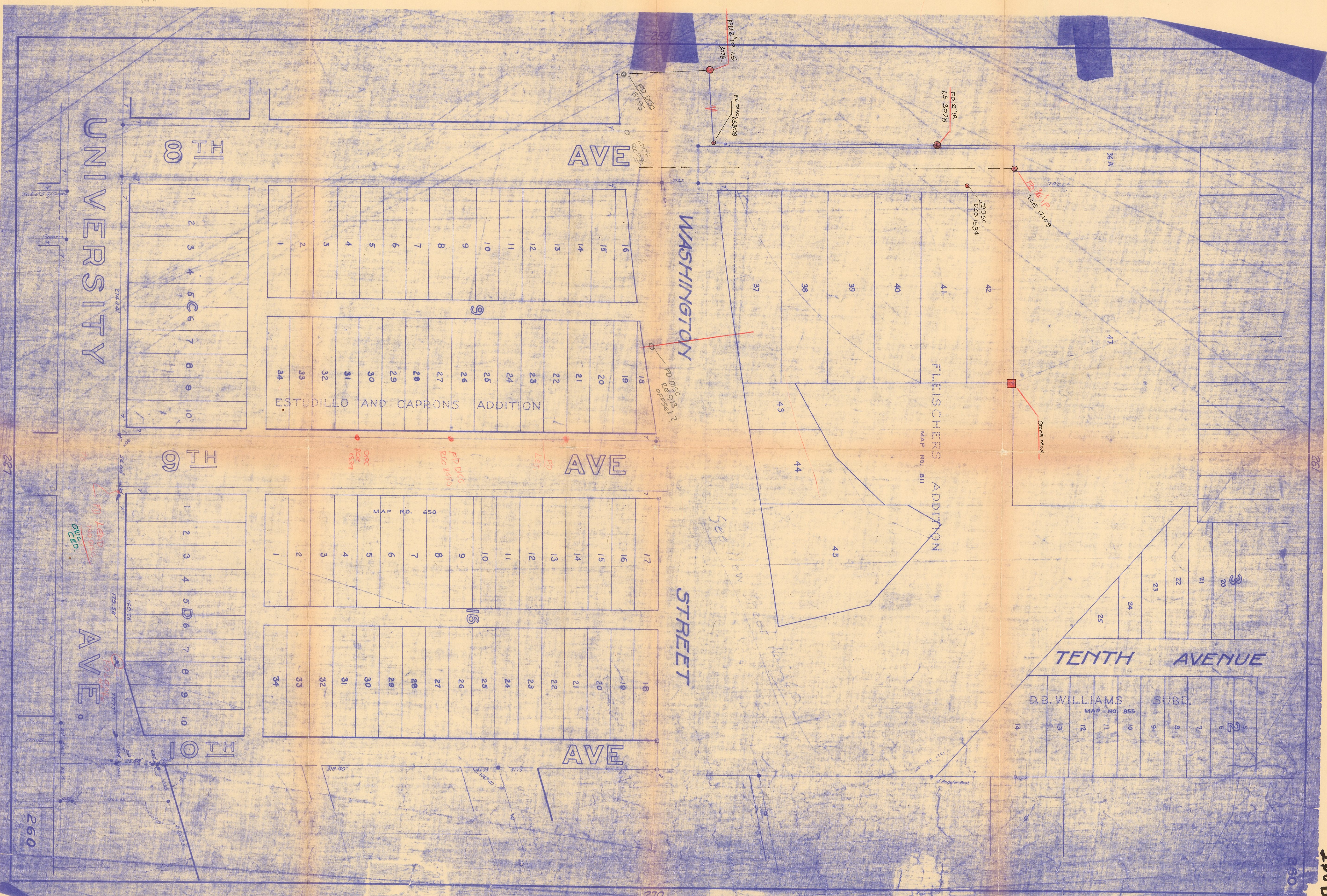
UNIVERSITY

AVE.



See old sheet # 260 also.

161.8
x 191
= 3072



UNIVERSITY

AVE

WASHINGTON

AVE

STREET

AVE

AVE

FLEISCHERS ADDITION

TENTH AVENUE

ESTUDILLO AND CAPRONS ADDITION

D.B. WILLIAMS SUBD.

MAP NO. 855

MAP NO. 811

MAP NO. 650

260B

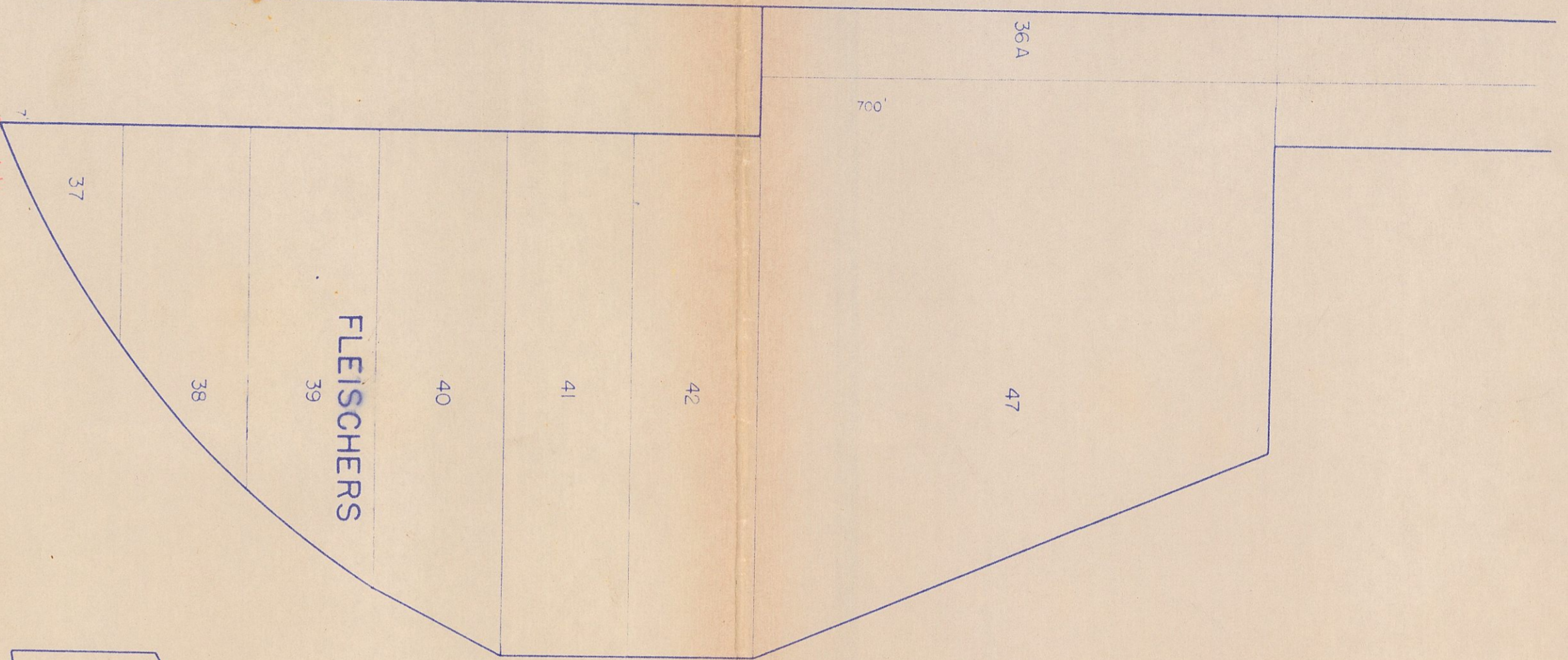
260

260

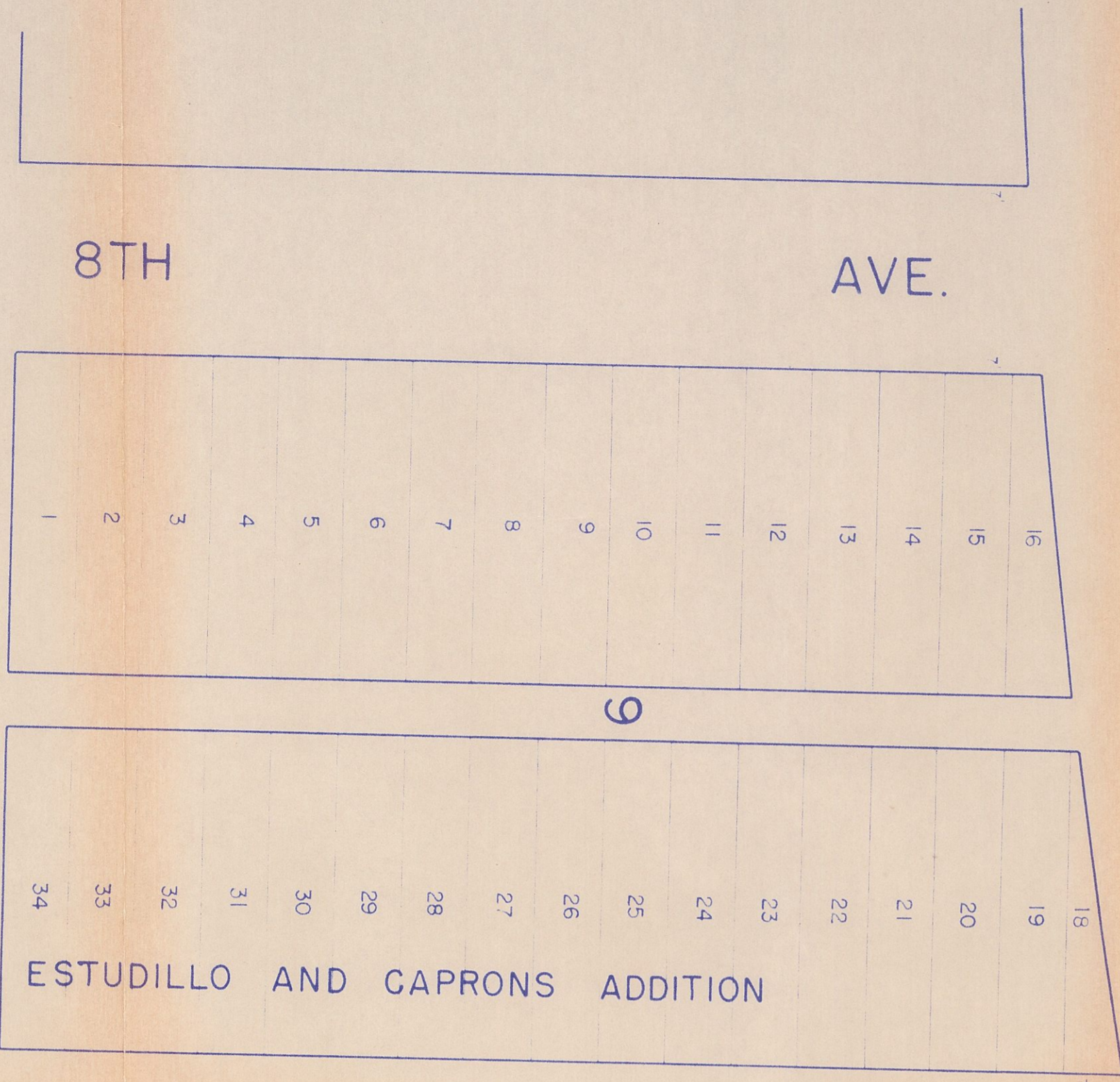
261

267

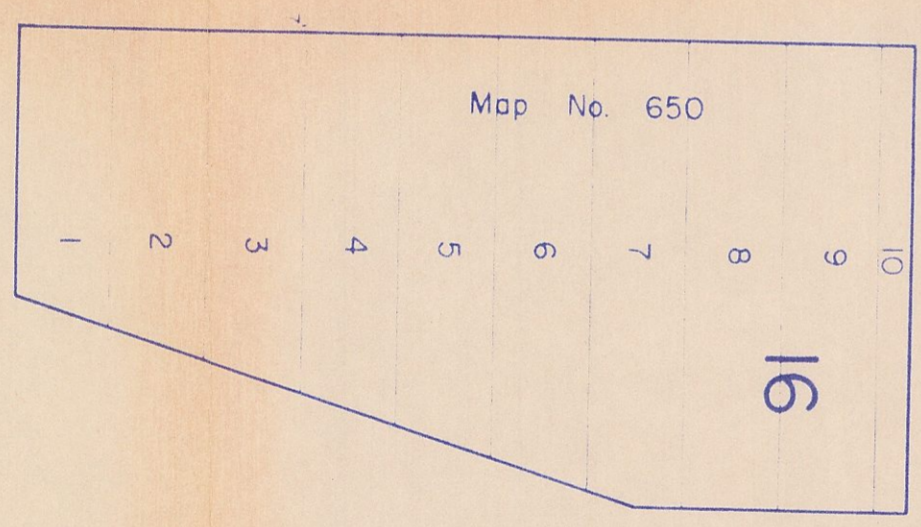
FREEWAY



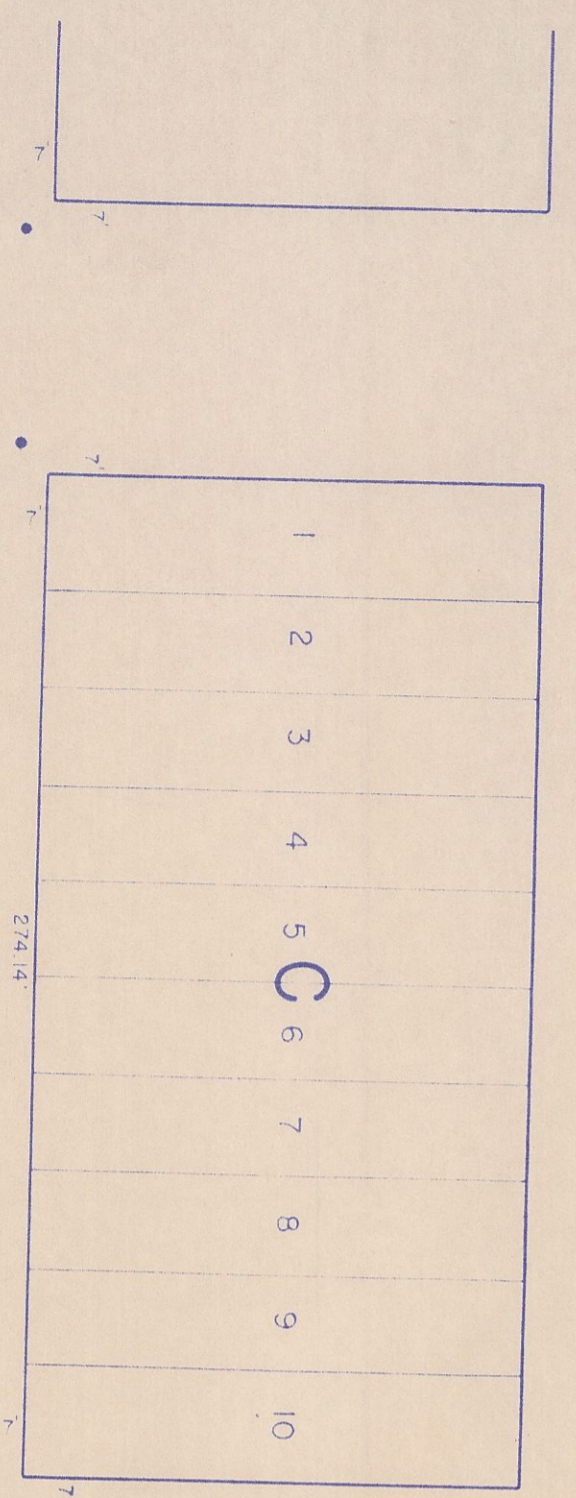
WASHINGTON ST.



8TH AVE.



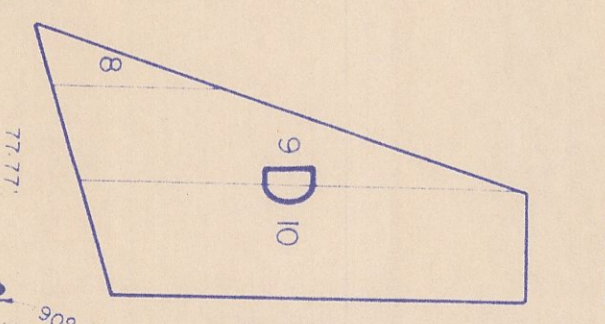
9TH AVE.



UNIVERSITY

274.4

CABRILLO AVE.



10TH AVE.

179.56'

77.77'

30.03'

31.04'

25.58'

104.68'

52.25'

73.17'

35.99'

Take 6" S. of Cover

Cover

R.F.C. 4-23-48

227

260

260A

664.65

538.46

50.92

20.49

0-03-48
DIS 573.273

(664.65) NORTH SIDE WASH. - 20.49 TO NORTH $\frac{1}{4}$ W. @ 90° ZELY
MEA EDM 538.46 SOUTH SIDE WASH. + 50.92 TO OLD 7X7 WASH.

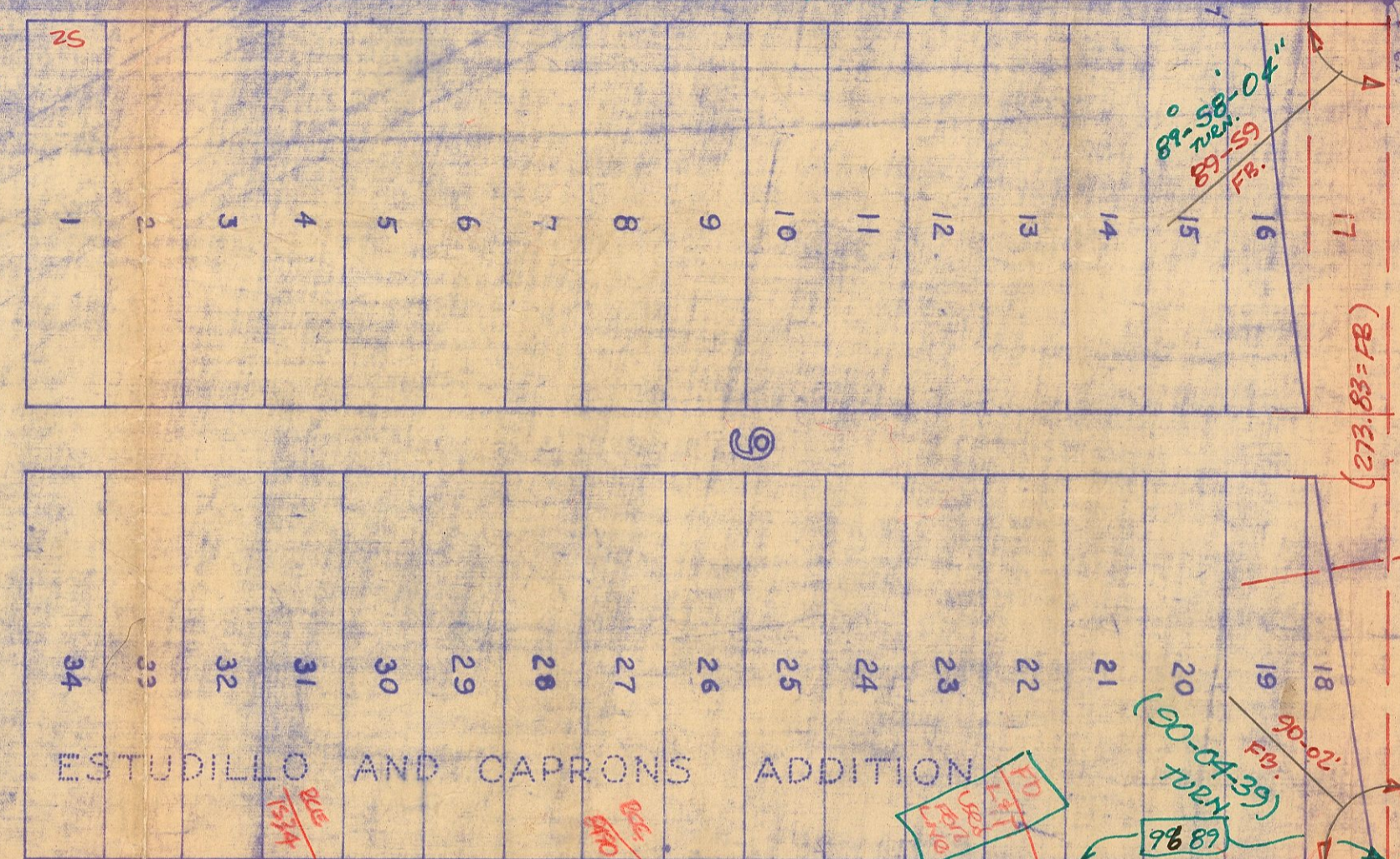
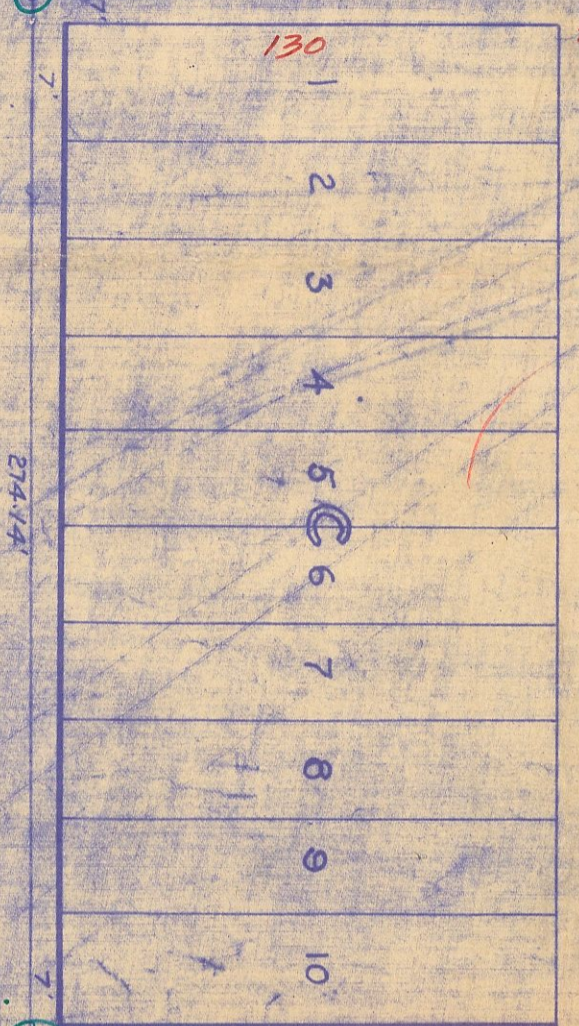
575 BLOCK PER MAP.
582 = 7X7 UNIV TO SLY PROP WASH.
582.38 = FB 1264 PG-2
582.38 = 7X7 UNIV TO 7X7 WASH.

674.16 = 7X7 UNIV TO NORTH $\frac{1}{4}$ WASH. @ 90°

AVE

UNIVERSITY

8TH



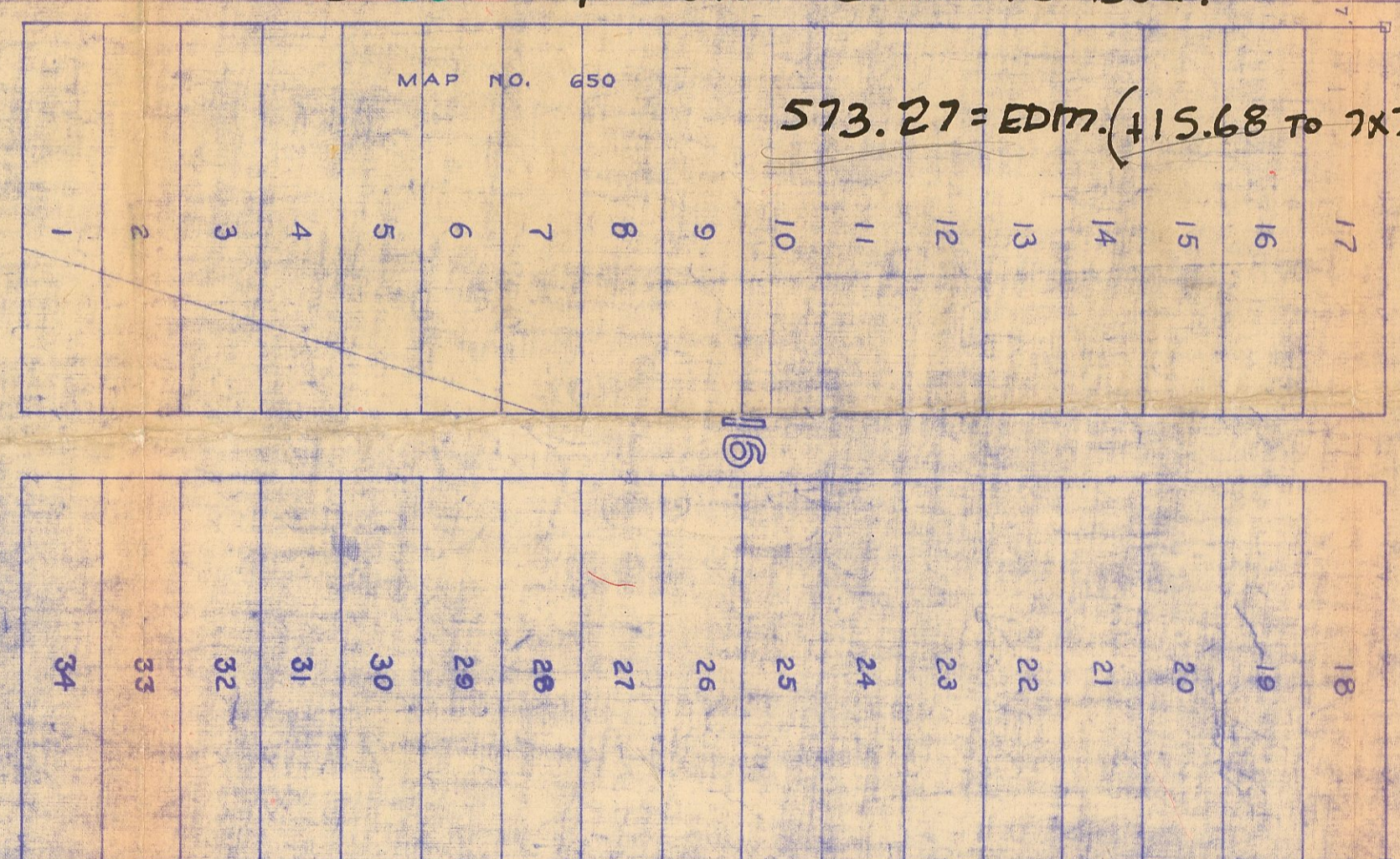
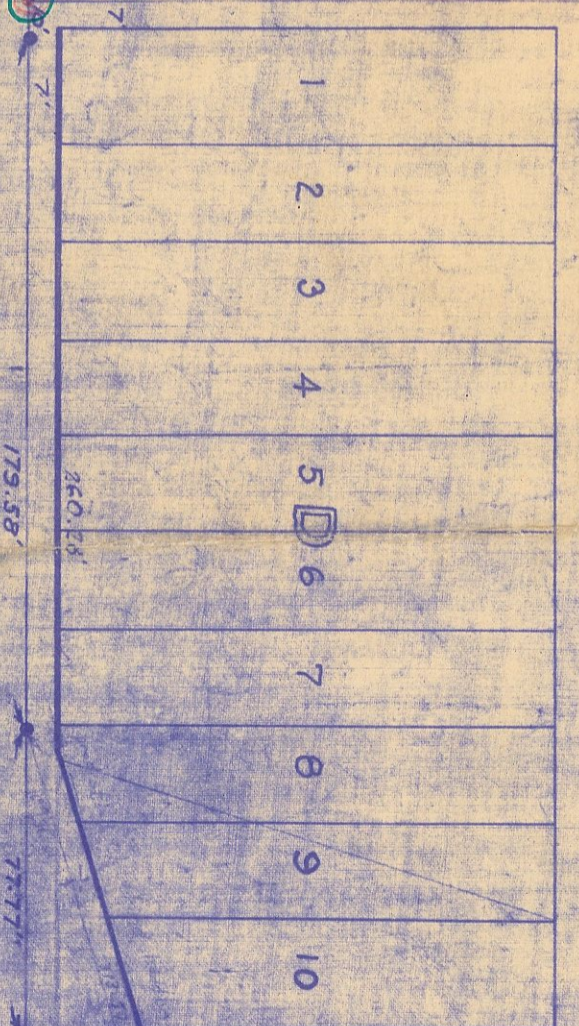
WASHINGTON

AVE

STREET

AVE

9TH



STREET

FLEISCHERS ADDITION

TENTH AVENUE

D.B. WILLIAMS SUBD.



578.95 FB 1264 PG-2, 7X7 UNIV TO 3 BK WASH.
581.95 = NLY 7X7 UNIV TO SLY PROP WASH.
588.95 = NLY 7X7 " TO SLY 7X7 WASH.
630.66 = NLY 7X7 UNIV TO 2 WASH. FB 1562.

573.27 = EDM. (+15.68 TO 7X7)

586 TO 3 BK

96.89
76.89
10 7 01

260

260 C